

GARDEN delights

WITH THE HIVE GALLERY

Known as one of the finest gardens in Australia, the cool climate Cloudehill Gardens of Olinda in the Dandenongs are the creation of owner Jeremy Francis.

Internationally famous, this spectacular hillside garden encompasses numerous garden rooms and is designed for glory in all seasons.

Jeremy moved to Victoria from Western Australia and since 1992 has been bringing to life his artistic vision at Cloudehill, with stunning compositions and vistas, informed selection of plant colour and textures, foliage and flowers complemented by man-made paths, walls and sculptures that focus the eye.

Local garden lovers will delight as this garden is immortalised in paintings by Jo Reitze, exhibited at The Hive Gallery in Ocean Grove throughout May.

Jo specialises in painting gardens and has spent over a decade painting 'en plein air' at Cloudehill since being the Resident Artist there in 2009.

In all seasons and all light, Jo has visited close to 20 times capturing the stunning scenery in a collection of 18 paintings, predominantly in gouache.

"I was quite a messy painter in my early days and never had a studio, painting outside and on my travels," she says.

"Transitioning to gouache as a medium was very helpful as it kept me tidier, but also dries quickly, enabling me to paint as I journeyed."

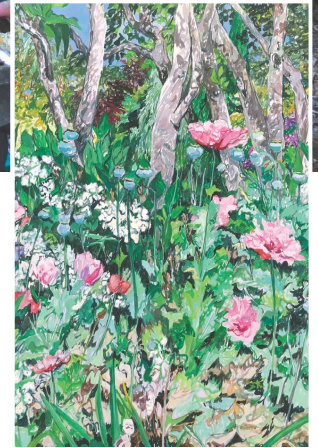
Those travels included to Monet's garden in Giverny and studying at the Paris-American Academy.

Jo's paintings also travelled, including to London as a finalist in the Mountbatten Award. In 2016, her painting, Cloudehill, January was awarded MSWPS Annie Davison Oliver Award, judged by Cathy Leahy, senior curator of prints and drawing at the National Gallery of Victoria. Currently, Jo is greatly honoured to be one of the 28 finalists from more than 600 entries in the Geelong Contemporary Art Prize.

Selected by Jason Smith, CEO and director of Geelong Gallery, Grazia Gunn and Jenepher Duncan, art historians and curators, this exhibition will run from May 29 to August 22, 2021, at Geelong Gallery. It makes May an exciting month for Jo. Joining her at the opening of her exhibition "Garden Delights" at The Hive Gallery will be Judy Vanrenen OAM, co-founder of Botanica Tours and author of three beautiful garden books.



Jo Reitze painting Cloudehill.



Cloudehill in Summer by Jo Reitze.

Judy brings with her a wealth of personal gardening experience and information on the world's most stunning gardens, and London's prestigious RHS Chelsea Flower Show, that Hive resident bronze sculptor Will Wilson exhibits at annually.

"Cloudehill is a garden artist's paradise," Judy says. "My paintings are a celebration of nature and the restorative power of gardens and gardening."

"I hope you enjoy this exhibition at The Hive. I am delighted to collaborate with Jeremy Francis, Willie Wildlife Sculptures and Botanica Tours to bring a touch of Cloudehill and Chelsea Flower Show to Ocean Grove, the place where I have holidayed throughout my

life and painted since my school days."

All are welcome to the opening on Saturday, May 1, from 2-4pm at The Hive Gallery, 41 Smithton Grove, Ocean Grove.

Feel free to don a floral touch in honour of the great gardens of the world.



2182-194 Bellarine Highway,
Newcomb, VIC 3219
PH: 52486655
www.JaycoGeelong.com.au



OPEN 7
DAYS A WEEK

WE BUY VANS

Safe and Easy, Free no obligation valuation over the phone!
- We come to you -
\$ PROMPT PAYMENT \$